



Haslam & Co Architects

# Dolphin's Barn

## Public Realm Improvement Plan

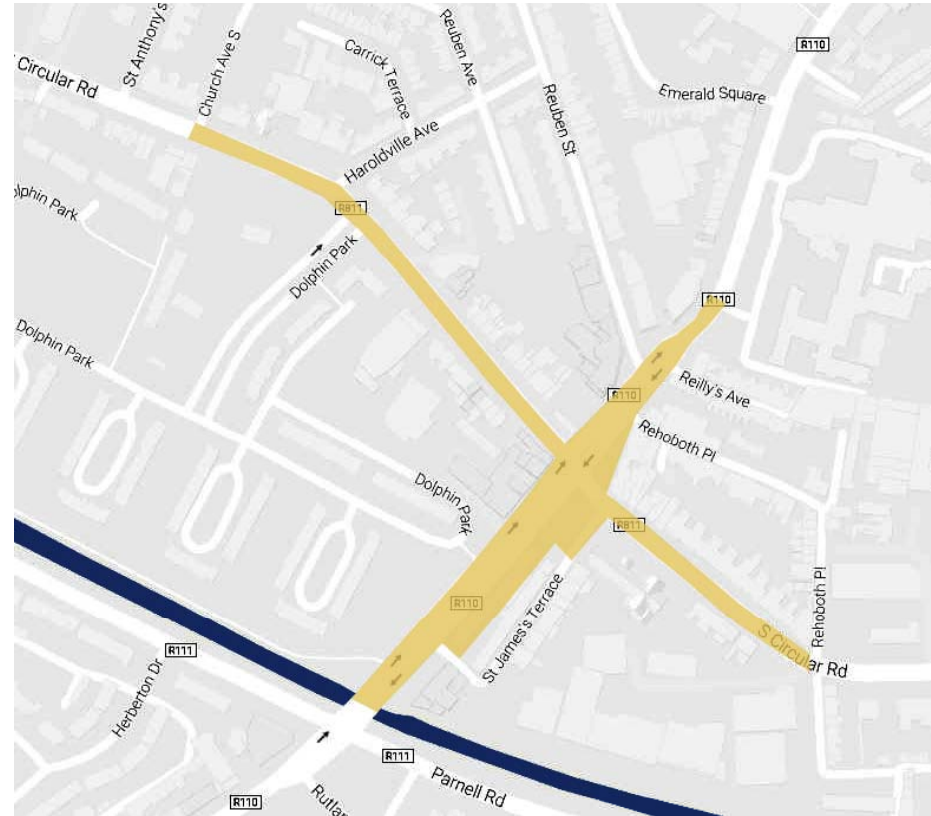
Council Meeting  
17-01-18

Haslam & Co Architects

## Project SCOPE

Focus of the project is on the intersection between SCR and Dolphin's Barn

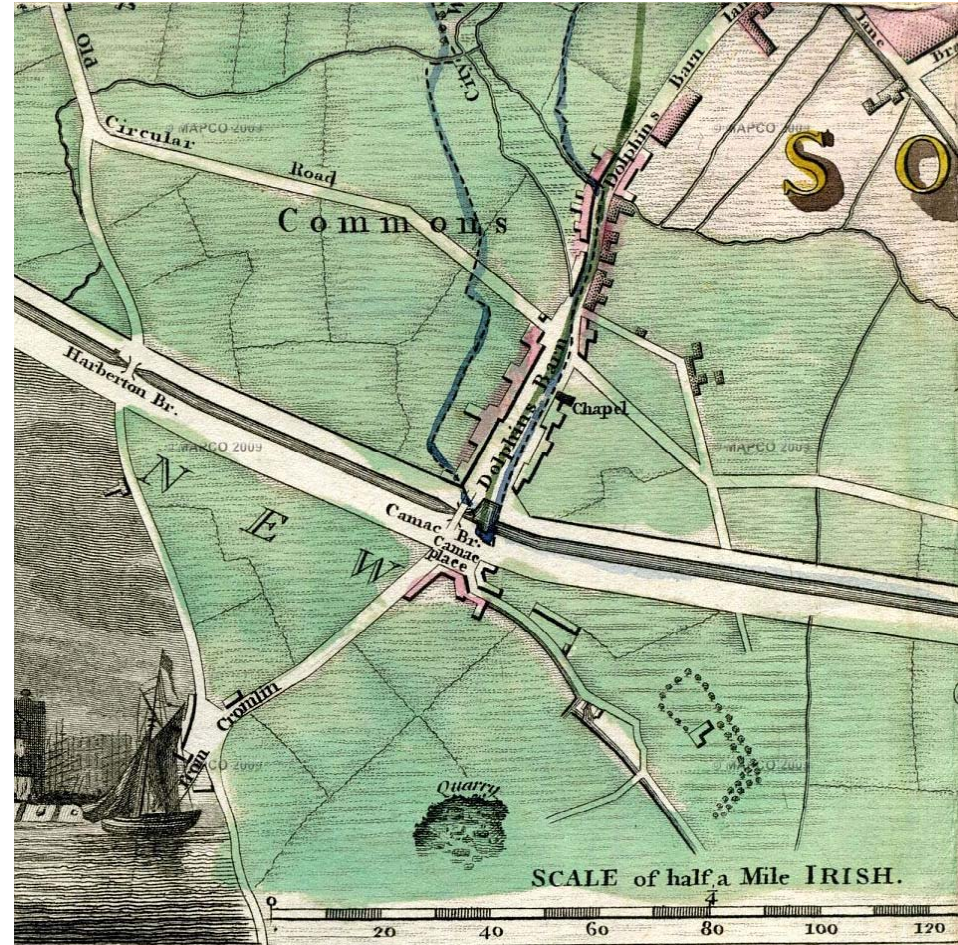
The aim of the project is to create an enhanced public realm providing a sense of identity and a coherent vision for the environmental and physical development of Dolphin's Barn Village.



Extent of plan



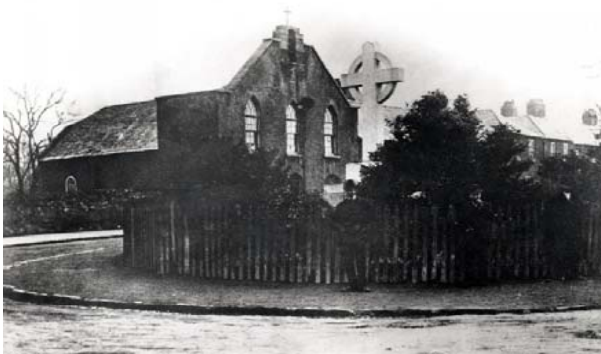
# OVERVIEW: Historical context



1798 'Wilson' Map



## OVERVIEW: Historical context



Haslam & Co Architects



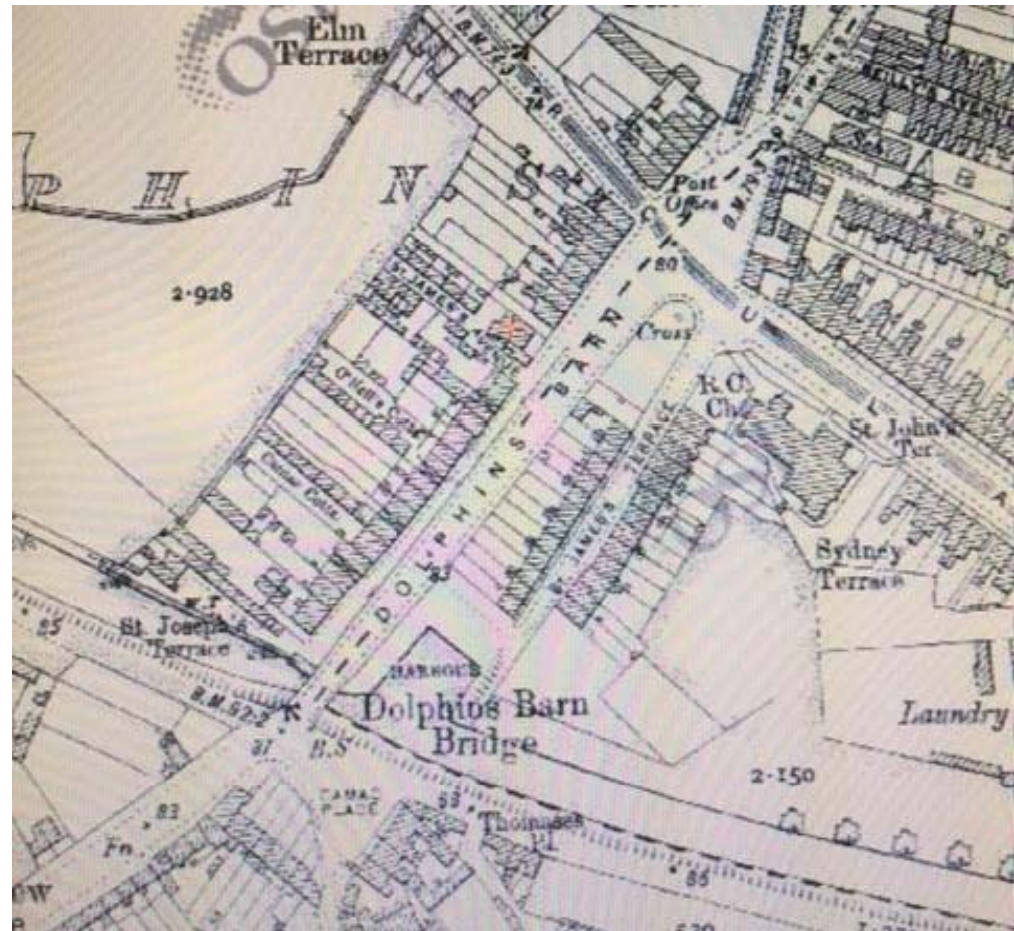
1843 Osi Map



## OVERVIEW: Historical context



Haslam & Co Architects



1909 Osi Map

## AIMS and objectives

1. The creation of a pedestrian friendly public realm
2. A material strategy that binds the diverse finishes together
3. Architectural proposals which look to strengthen the sense of edge to the broad street of Dolphins Barn.
4. A spatial strategy which looks to unify the existing linear pocket park and Church Park and in so doing make both more accessible.



## 1. Creating a PEDESTRIAN FRIENDLY PUBLIC REALM

The pedestrian realm at present is characterised by the following:

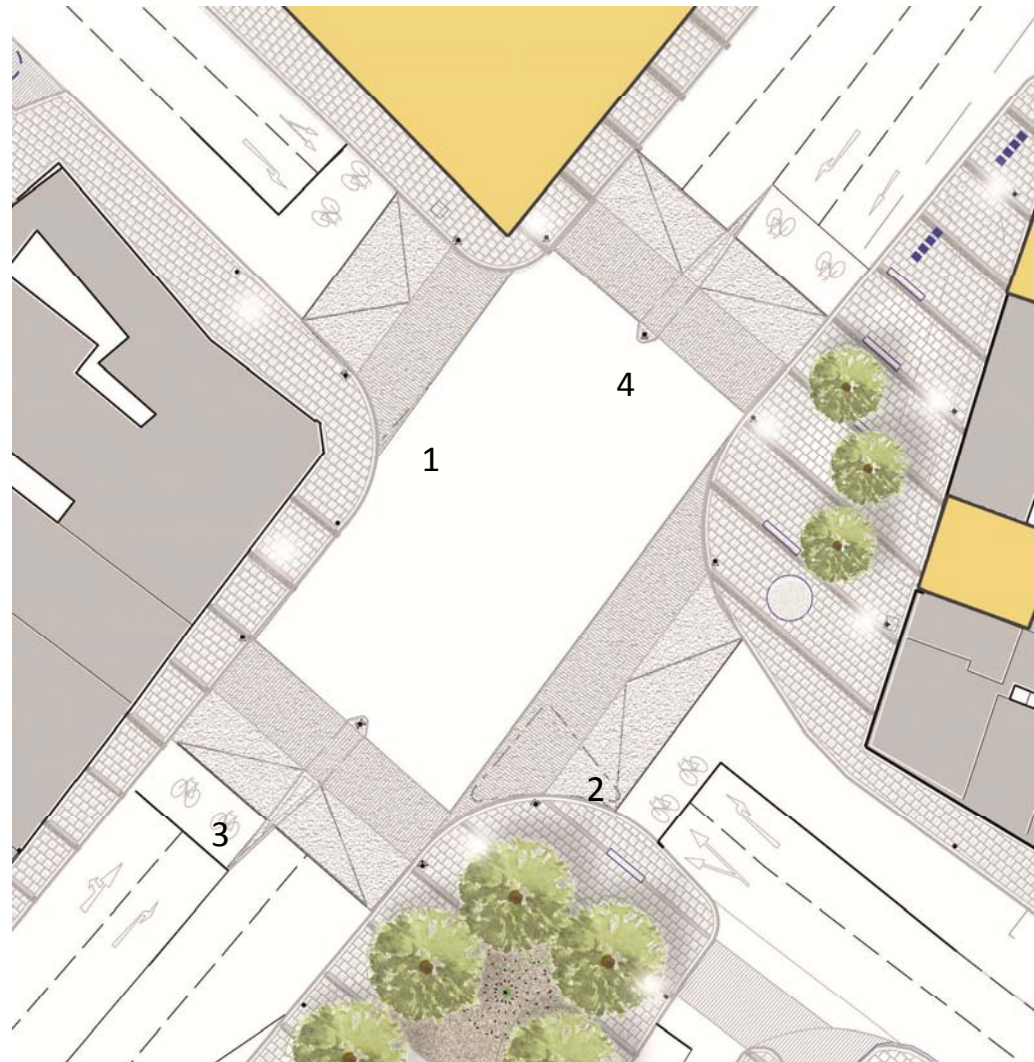
- Inappropriate pavement widths at Massey's corner
- Corralled crossing points to Dolphins Barn Road
- Public space in front of Boles Chemist used as car parking
- Fenced off park in front of church
- Lack of seating and places to enjoy sitting
- Lack of visual coherence in details
- Poor quality surface materials
- Lack of visual coherence spatially





## TRAFFIC Proposal

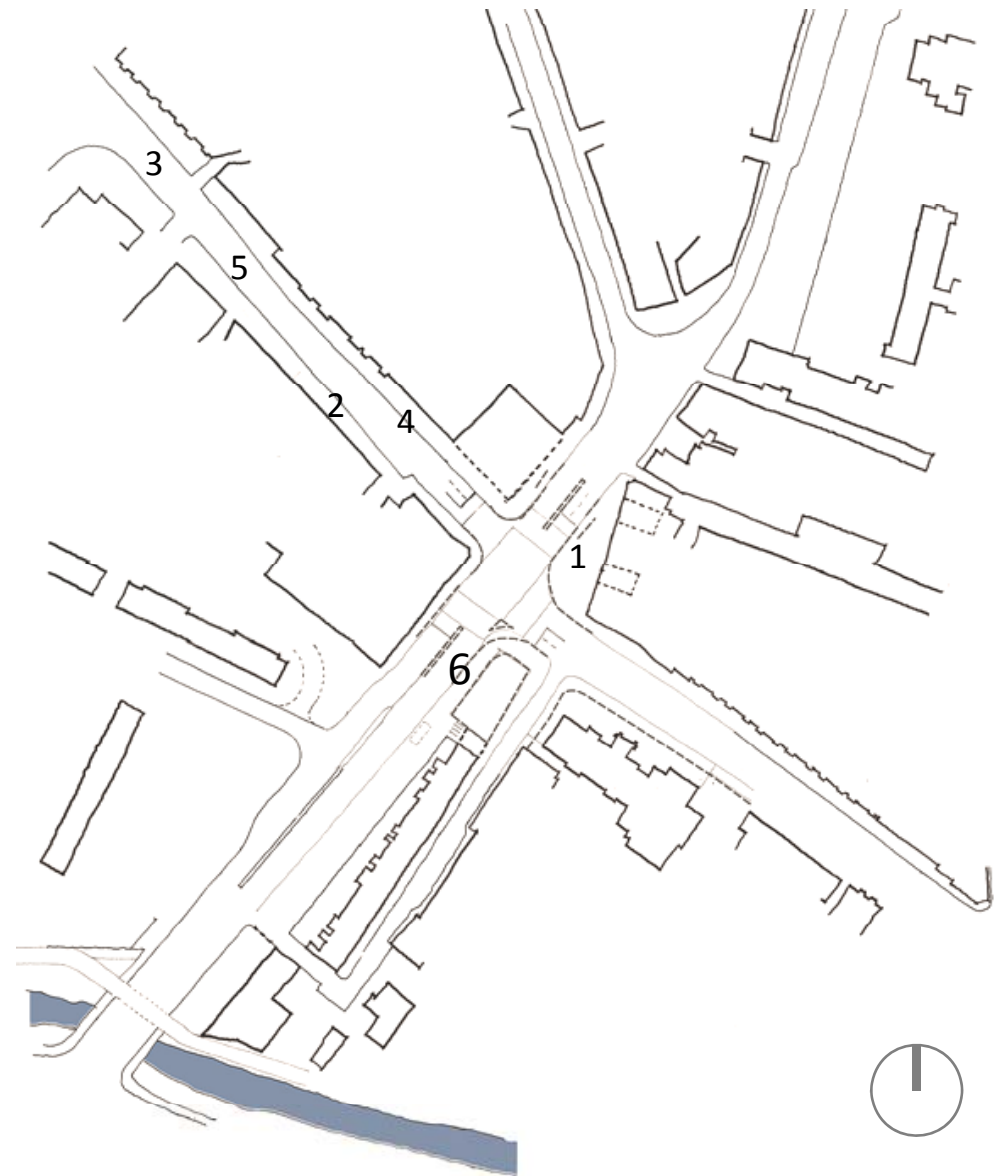
1. Existing lane configuration retained (with modified tracking)
2. Slip road removed (SE corner)
3. Slower traffic speeds through raised pedestrian crossings
4. Smaller pedestrian island (no chicaned route.)





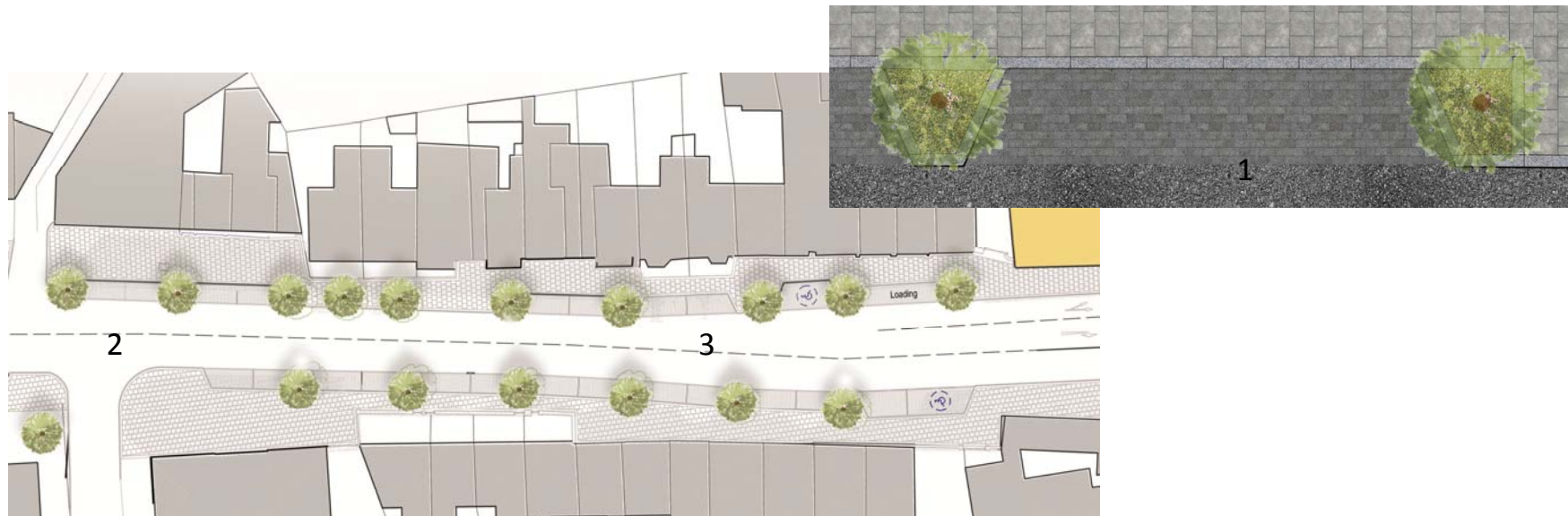
## PARKING Critique

- 1. Uncontrolled parking in pedestrian zone
- 2. Dangerous end on parking to the street
- 3. Need for designated parking
- 4. Poor loading and disabled access bays.
- 5. Mix of designated and undesignated parking to SCR
- 6. Lack of bike parking generally



## PARKING Proposal

1. Designated parking integrated with tree pits
- 2 . Continuation to connect with Rialto
3. Additional loading and disabled parking bays  
Proposing 33 designated spaces (cf 18 at present and 30 non designated)



## 2. MATERIAL coherence

Granite kerbs and  
setts



Example of granite  
strip bound paving



Exposed  
aggregate  
concrete to mark  
pedestrian  
crossings



**MATERIAL coherence**

Tree pits in village  
centre



Tree pits to SCR

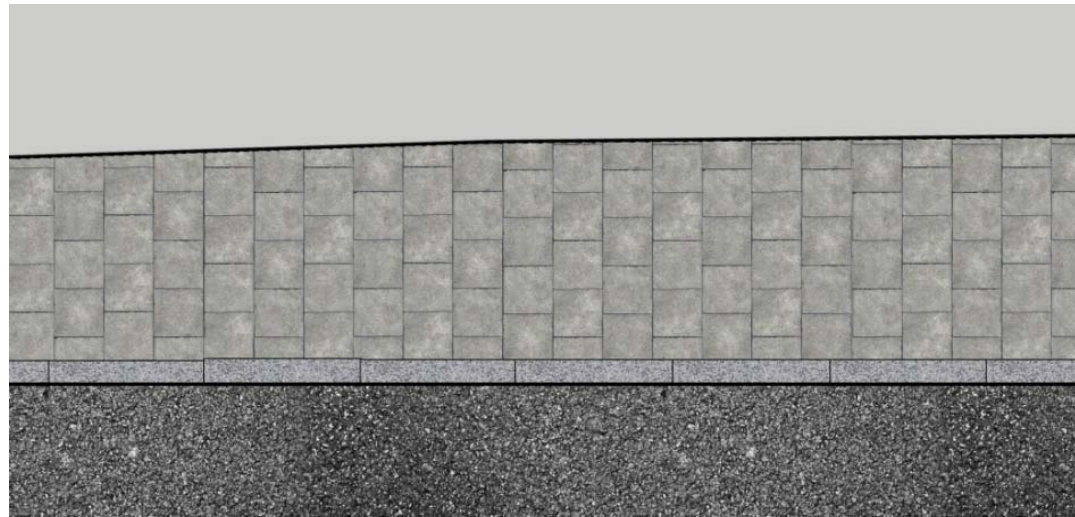


Granite bench

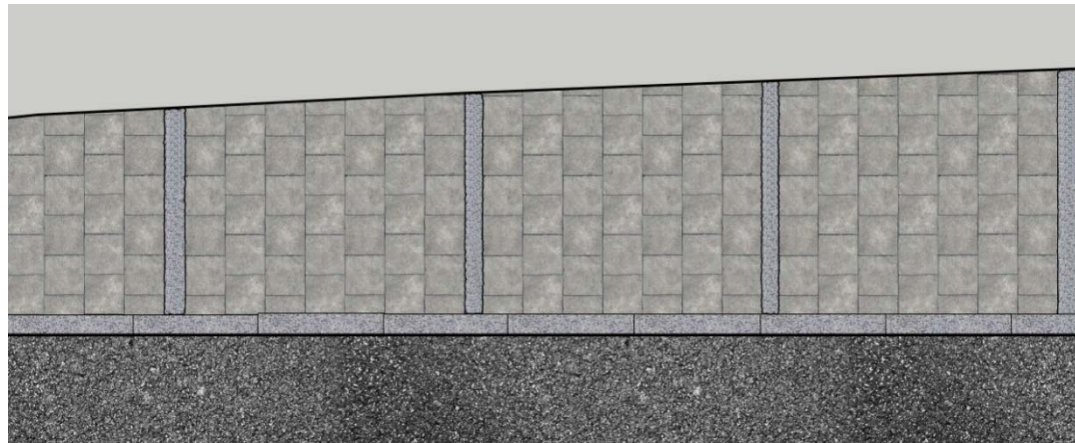


# PAVING Language : Proposed

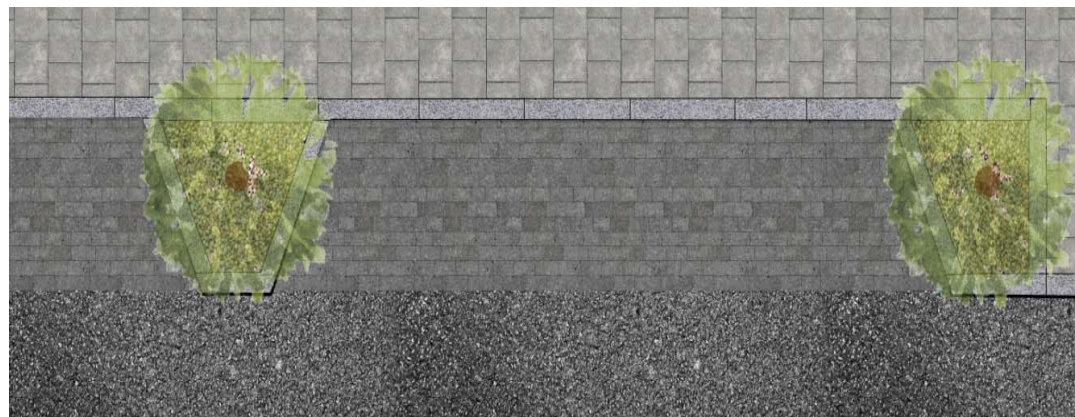
Layout (outside of village)



Layout (Village centre)



Parking with tree pits



## VILLAGE Identity: proposal



Signage to mark entering village.

Dolphins Barn bricks in café  
and landscape details

Haslam & Co Architects



### 3. ARCHITECTURAL Proposals

1. A gateway to the city
2. Improved architectural quality
3. Redefine the broad street of Dolphins Barn
4. Café to finish end of St James Terrace



## ARCHITECTURAL Proposals



Café to end of St James  
Terrace, facing the park



## ARCHITECTURAL Proposals



Infill blocks between Ziggys and Boles  
to give greater sense of enclosure,  
indicative only

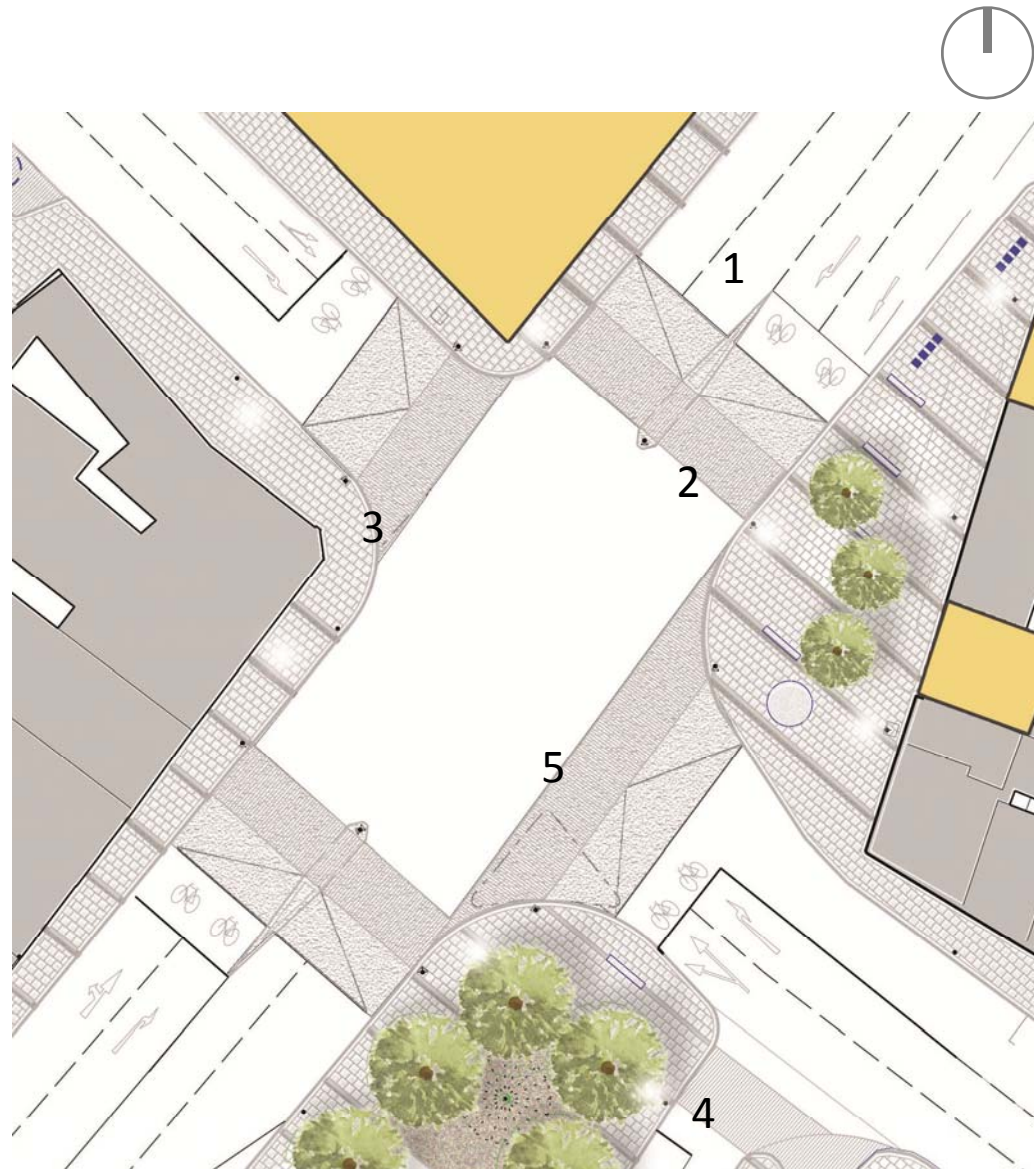
## ARCHITECTURAL Proposals



Gateway building to southern  
end of Dolphins Barn,  
indicative only

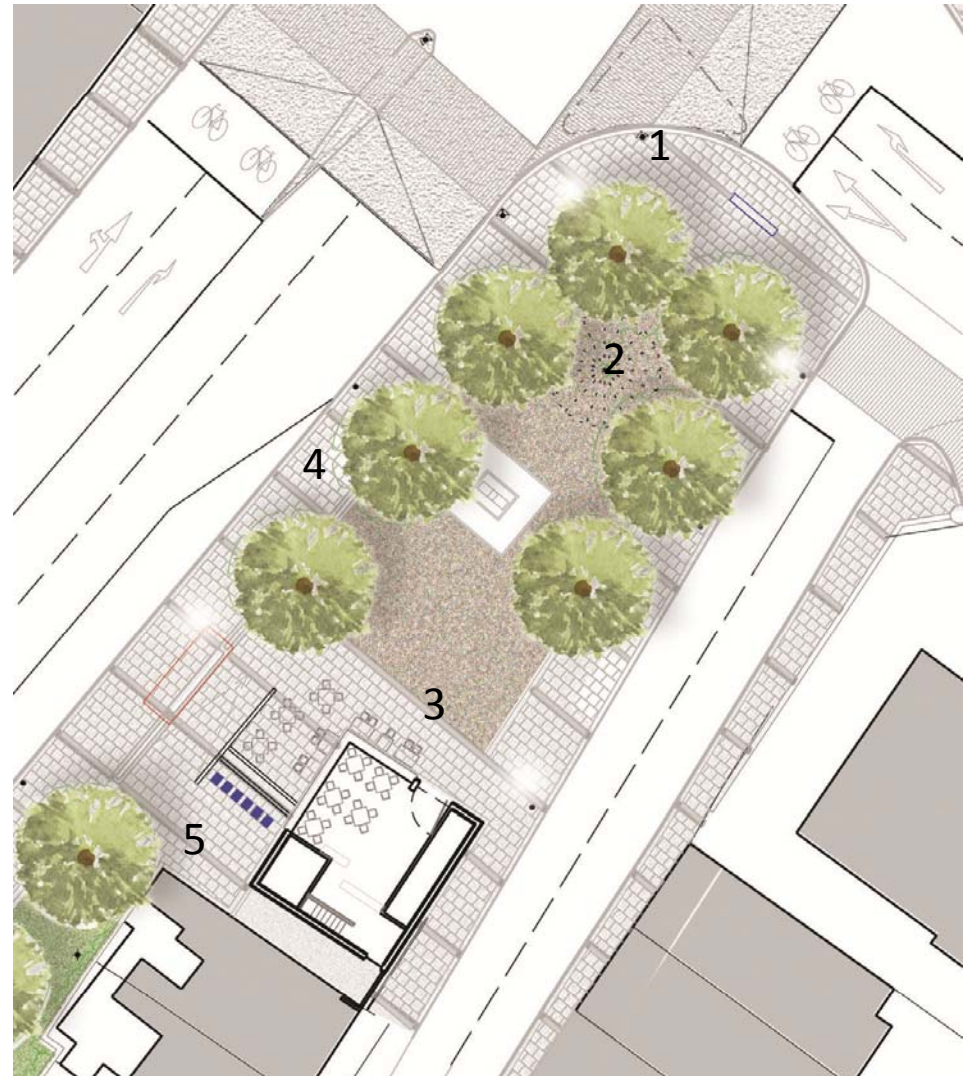
#### 4. PUBLIC SPACE: Crossing

1. 'de clutter'
2. island refuge to crossing at Cork St (circa. 17m)
3. widened pavement around Masseys. (shifted road tracking)
4. connect church to public space
5. raised contrasting surface to pedestrian crossing



## PUBLIC SPACE: Café and Park

1. railings removed
2. Position of Christmas tree
3. cafe to gable end of terrace.
4. Planters and benches protecting pedestrians from traffic
5. Bike parking

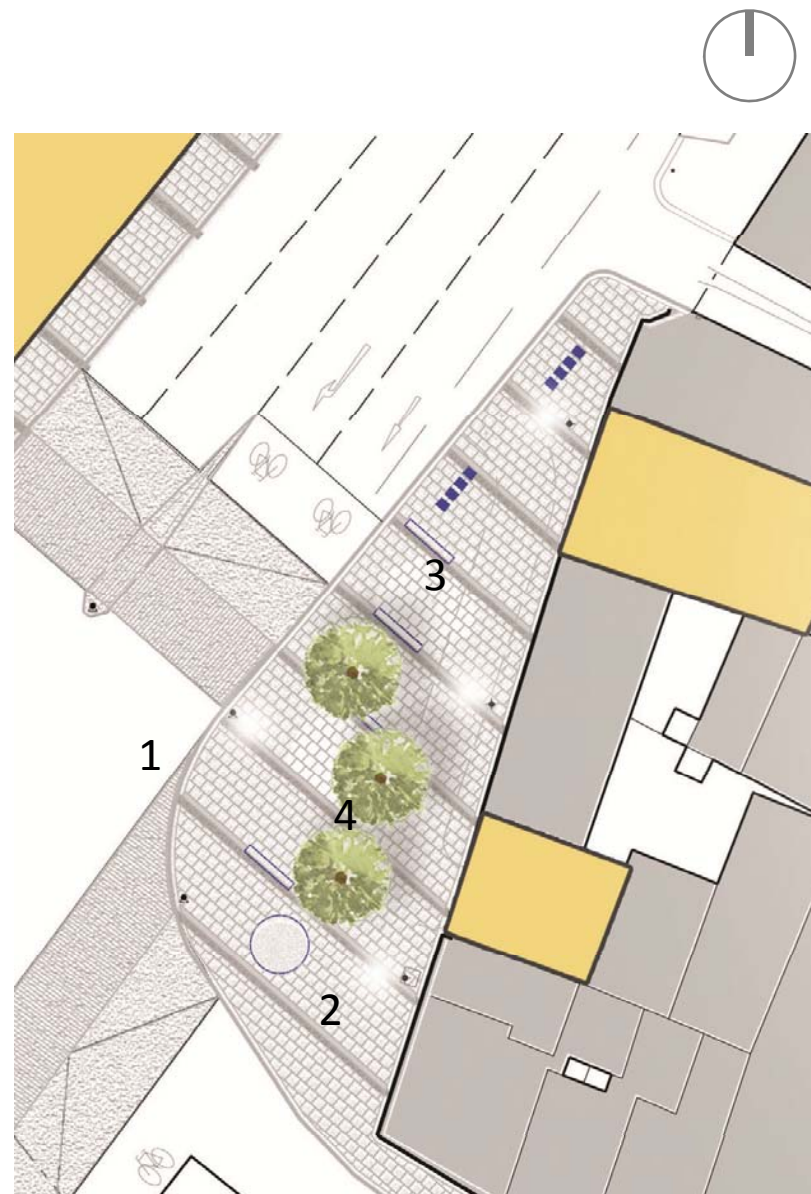


## PUBLIC SPACE: Café and Park



## PUBLIC SPACE: Ziggys and Boles

1. Railings removed
2. Sculpture as focal point, reinforce local history
3. Paving and benches
4. Birch trees cluster

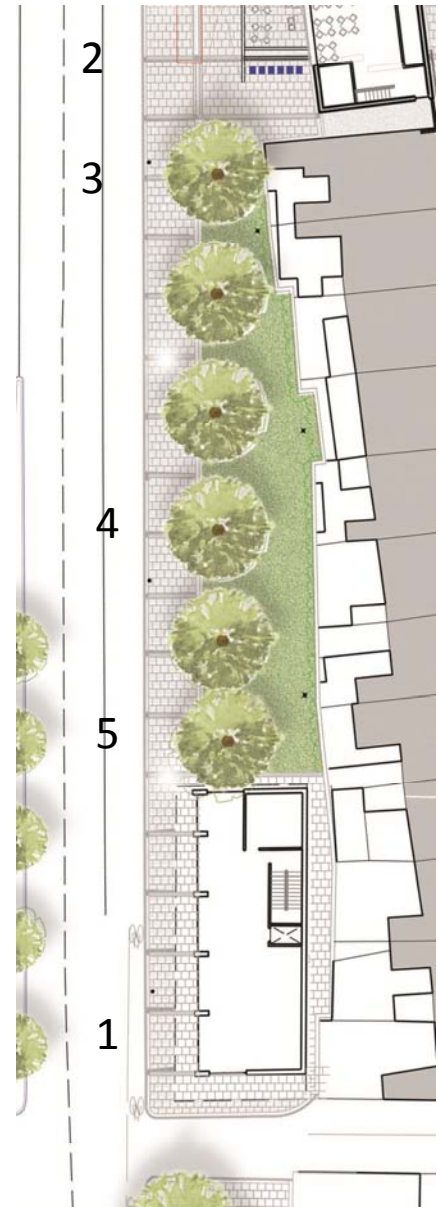


## PUBLIC SPACE: Ziggys and Boles



## PUBLIC SPACE: Linear Park

1. new mixed use development to create entrance to village
2. extension of café square
3. bus stop retained
4. lime tree avenue
5. paving linkage



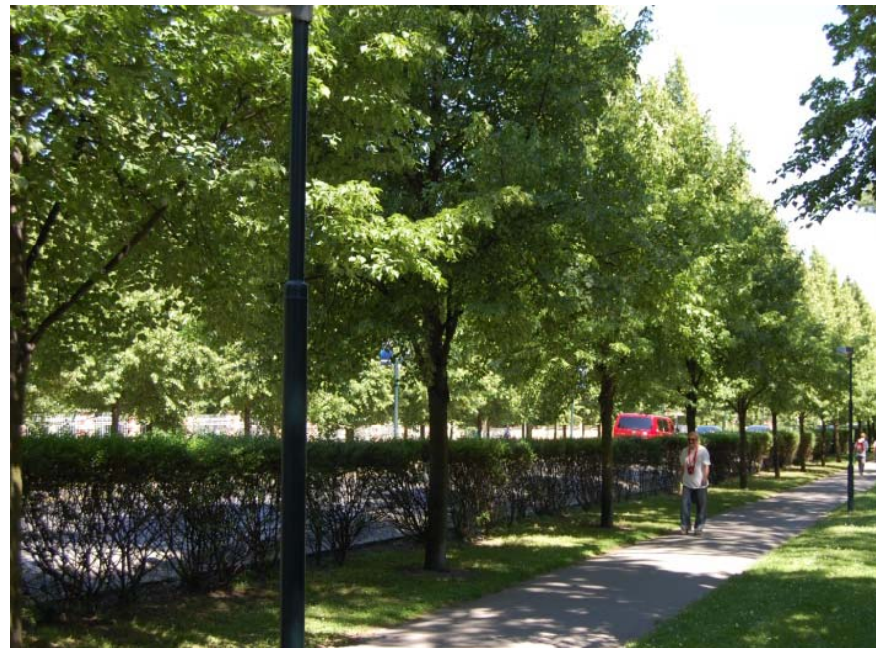


**PUBLIC SPACE: Linear Park**

Sensory planting  
within park



Continuation  
of lime  
Tree avenue



## OVERVIEW: Proposed

1. new 5 storey block part of Dolphin's House regeneration
2. repaved forecourt
3. proposed up to 4 storey gate way building
4. Garden with railings removed, cafe to terrace end
5. Exposed aggregate concrete pedestrian crossings
6. hornbeam trees with parking between
7. 4-6 storey building PP
8. Proposed infill sites
9. Public space with sculpture,
10. position of Christmas tree
11. Continuation of linear park with lime tree avenue

Haslam & Co Architects



# OVERVIEW: Proposed



Proposed birds eye perspective looking south